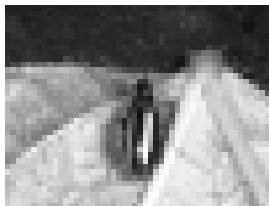


Dry Beans XIII-4

Flea Beetles

Gary L. Hein & Frank B. Peairs



Flea beetle adult.

Pale-striped flea beetle damage is very sporadic in dry beans. Populations tend to build up in alfalfa and dry beans, but little is known of the feeding habits of the larval stage of this insect.

Identification (and life cycle/seasonal history)

The pale striped flea beetle is a dark beetle about 1/6 inch long with two pale white stripes running longitudinally on its back. Flea beetles are quick and difficult to see because they will jump off the plants as you approach them. The pale striped flea beetles overwinter as partially grown larvae in the soil. They begin to feed on roots and root hairs as plants begin to germinate in the spring. Adult flea beetles begin to emerge in June, and they are active over an extended period through the late spring and summer. They begin to feed on bean foliage shortly after emergence.

Plant Response and Damage

Adult feeding results in small shot holes (1/16 to 1/8 inch diameter) on leaves and can cause substantial defoliation to young seedlings. Older plants will also be damaged, but seldom will significant leaf area be damaged. Larvae feed on the roots and root hairs of plants, but the extent of damage to beans is not known.

Management Approaches

The risk of serious flea beetle damage is greatest near the previous year's alfalfa or dry bean fields or where host weeds, such as, poverty weed, bindweed and pigweed are numerous. Monitor beans planted in or near high risk areas for early season damage. Heavy damage in the seedling stage can threaten stand and insecticide treatment should be considered.

Product List for Flea Beetles:

Insecticide	Product per Acre	Preharvest Interval , remarks
Mustang MAX ^{RI}	2.72-4.0 oz/A	PHI 21 days; REI 12 hrs.

Sevin/carbaryl ¹	See label for rates	PHI 21 days; REI 12 hrs.
Multiple formulations		
Phaser 3EC	2/3-1 1/3 qts/A	PHI 3 days; REI 24 hrs.
Warrior with Zeon technology ^{R1}	2.56-3.84 oz/A	PHI 21 days; REI 24 hrs.

^RRestricted use pesticide ¹Labeled for chemigation ²Generic active ingredient, several formulations

The information herein is supplied with the understanding that no discrimination is intended and that listing of commercial products, necessary to this guide, implies no endorsement by the authors or the Extension Services of Nebraska, Colorado, Wyoming or Montana. Criticism of products or equipment not listed is neither implied nor intended. Due to constantly changing labels, laws and regulations, the Extension Services can assume no liability for the suggested use of chemicals contained herein. Pesticides must be applied legally complying with all label directions and precautions on the pesticide container and any supplemental labeling and rules of state and federal pesticide regulatory agencies. State rules and regulations and special pesticide use allowances may vary from state to state: contact your State Department of Agriculture for the rules, regulations and allowances applicable in your state and locality.

Categories: Dry beans, Flea beetles

Date: 04/24/2006