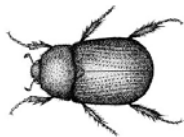


Sunflower XIV-12

Carrot Beetle

Frank B. Peairs



Carrot Beetle

Field Biology and Identification

A moderate size 13 to 17 millimeter ($1/2 - 11/16$ inch), oblong-ovate, dark reddish-brown to black beetle. Wing covers have longitudinal depressed furrows with punctures. Adult beetles overwinter in the soil and emerge in the spring to lay eggs. The larvae are C-shaped and white, resembling common white grubs. They feed on grasses and decaying vegetation in the soil but will attack the roots of crops.

Plant Response and Damage

The second-brood adults feed two to 13 centimeters (one to five inches) below the surface on sunflower roots. Adult beetles chew on roots leaving a gouged appearance. Large infestations may cause stunting, wilting, and lodging.

Management Approaches

No control is currently recommended for this insect.

Categories: Sunflower, Insects, Carrot beetle

Date: 04/16/2004