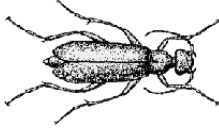


## Sugarbeets XX-11

### **Blister Beetles**

*Gary L. Hein*



*Blister beetle adult*

Several species of blister beetles will feed on sugarbeet. Four of the most common blister beetles found to feed on sugarbeet are the black, ash-gray, spotted and the striped. Economic infestations of these insects are rare, but isolated infestations may occur in years with high grasshopper populations.

#### **Identification (life cycle and seasonal history)**

Blister beetles are soft-bodied insects with a slender cylindrical shape. They range in length from about 1/3 to 3/4 inch. Blister beetle larvae are predacious on grasshopper eggs and are therefore beneficial. In years when grasshopper populations are high, blister beetle adult populations also will be high.

#### **Plant Damage and Response**

Blister beetles often feed in large aggregations that can result in rapid defoliation of the host plants in spots in a field. Total leaf defoliation can occur, leaving only the midribs of the plants; however, these infestations are generally limited to small patches.

#### **Management Approaches**

Scouting of sugarbeet fields and insecticide treatments of damaging populations is necessary to manage this occasional pest. No insecticides are labeled for blister beetle control in sugarbeet; however, a product labeled for blister beetle control on other crops and labeled for use on sugarbeet should provide good control (e.g. carbaryl).

Categories: Insects, Sugarbeets, Blister Beetles

Date: 04/19/2006